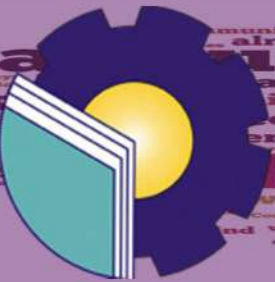


Inovish Journal



Published by:
Research and Community Service Center
State Polytechnic of Bengkalis



INOVISH JOURNAL

VOLUME 11, NUMBER 1, JUNE 2026, PAGE 1-92

Editor in Chief:
Arita Destianingsih, M.Pd.

Editorial Boards:
Ari Satria, M.Pd.B.I.
Risda Asfina, M.Pd.
Puspita Dewi, M.Pd.
Pretti Ristra, S.Pd., M.Ed.

Editorial Officer:
Aswandi, M.Pd.

Address:
English Department
2nd floor, GKT 2 Building
State Polytechnic of Bengkalis
Jln. Bathin Alam, Sungai Alam- Bengkalis
Telephone: (+62766) 24566/24577 Fax. (+62766) 8001000
Email: arita@polbeng.ac.id

INOVISH JOURNAL: Journal of Language and Innovation and English Language Teaching is committed to exploring the broad areas of language, creativity and innovation using language as a medium of information and highlighting issues in ELT. Preference is given to articles of English language; articles of this kind will be especially welcome. However, there is no restriction to articles with specifically English content. The journal is published twice a year (June and December) presenting articles containing creativity and innovations using language in producing products, analyses, studies, application of theories, research report, material development, teaching and learning languages and reviews. Contributors are invited from both members of and non-members of the English Department of State Polytechnic of Bengkalis

INOVISH JOURNAL

VOLUME 11, NUMBER 1, JUNE 2026, PAGE 1-92

TABLE OF CONTENTS

The Making of An Informational Video of Local Food Souvenirs Production Process in Rupert Island <i>Riska Fatmawati, Safra Apriani Zahraa, Arita Destianingsih and Rini Fitria</i>	1-9
The Making of An Informational Book About State Polytechnic of Bengkalis <i>Ria Ramadani and Rionaldi</i>	10-21
Integration of Machine Room Technology in English Language Learning to Improve English Language Skills of PBSI Students <i>Fatma Yuniarti, Seftika, Izhar, Muhammad Dzul Fikri, and Fawaaz Rafi Irfansyah</i>	22-41
Language Variation Used for Men and Women in Minangkabaunese <i>Okti Wilymafidini, Arpan Zaman and Herayati</i>	42-53
Analyzing Emotional Engagement in English K Pop Lyrics: A Reader Response Study Of “Waste It on Me” <i>Fanalisa Elfa and Aulia Putri</i>	54-63
Moral Values Reflected in Langston Hughes’ Short Story “Thank You, Ma’am” <i>Aulia Putri and Fanalisa Elfa</i>	64-77
The Contribution of Sociolinguistics to The Phenomena of Korean Artist Suicide <i>Rahmatul Khasanah, Nuria Mufidah, Yanti Rahayuningsih, and Diajeng Ayu Rahadyani</i>	78-92